

SED 3/2 MFP Multiport Valve



**...with wide applications in the
aseptic process industry**

The Advantages of the 3/2 MFP Multiport

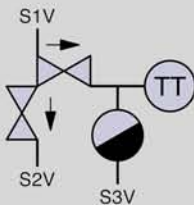
- Minimized dead leg
- Compact design and smaller envelop dimension with parallel and one-sided positioned valve actuation
- No costly field welds
- Optimized drainability, efficient cleaning (CIP) and sterilization (SIP) as well as simple product handling
- Standardizing with wide application fields in the aseptic process and tank technology
- Reducing of qualification and validation documentation requirements
- Cost efficient manufacturing because of standardization
- Depending on the quantity alternatively as investment cast multiport valve available
- Almost all size combinations are possible

Material und Applications

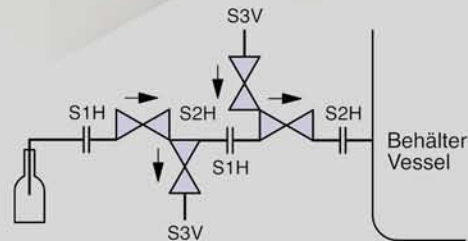
- 1.4435/ 316L ASME/BPE machined from a solid block material
- 1.4435/ 316L Investment cast for applications not in direct contact with product conducting plant sections e. g. CIP and SIP media, temperature measurement with condensate drain and so on.

Application Examples

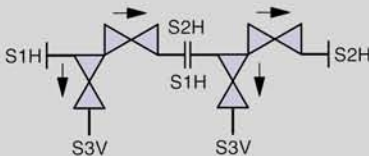
Multiport valve for hygienic condensate removal with integrated temperature measurement



Multiport valve for sampling



Block- und bleed function



Cleaning and draining of piping and valve combinations GMP-conform

