

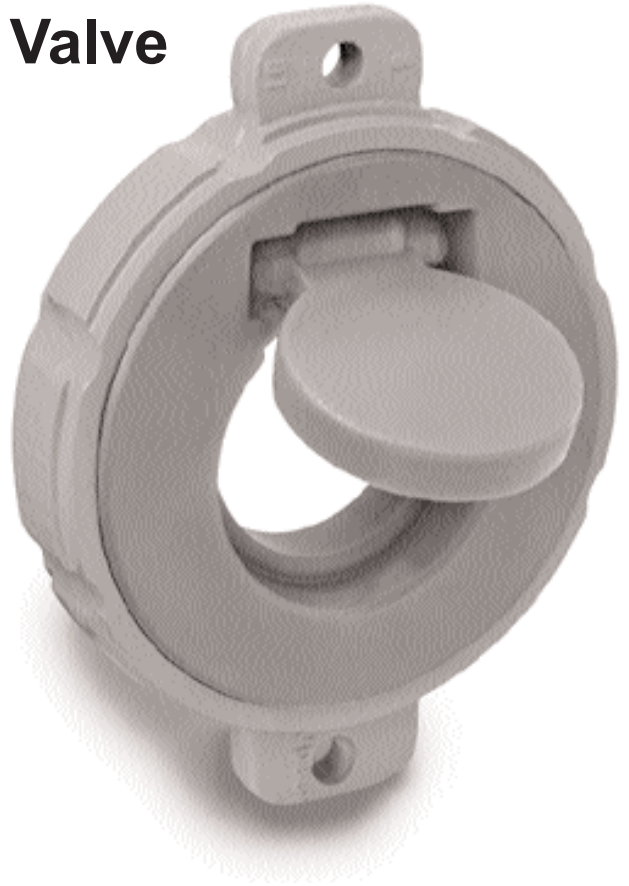
# 070 Wafer Swing Check Valve

Sizes 3 through 12 inch, ANSI Class 150

Consult factory for Class 300 applications.

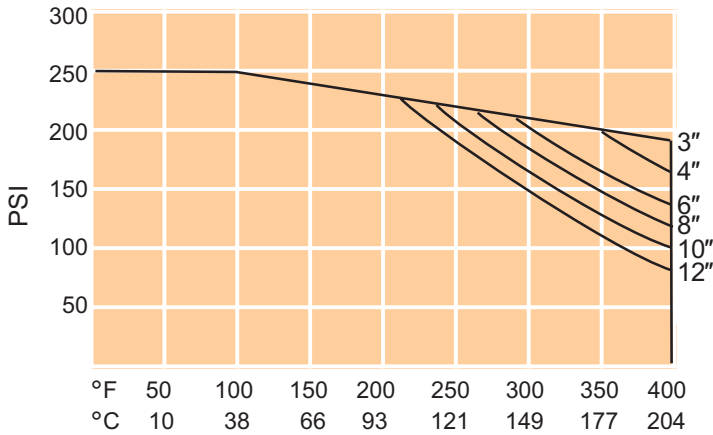
Fully lined wafer swing check valves are ideal for use in totally lined piping systems or to replace costly high alloy valves in corrosion applications. The valve can be mounted horizontally or vertically with upward flow.

Tufline wafer swing check valves are of two piece construction with only one moving part. Integral hinge pins fit into the valve body recess. There are no springs or pins to corrode or wear.



## Pressure-Temperature Ratings

(Valves with PFA linings)



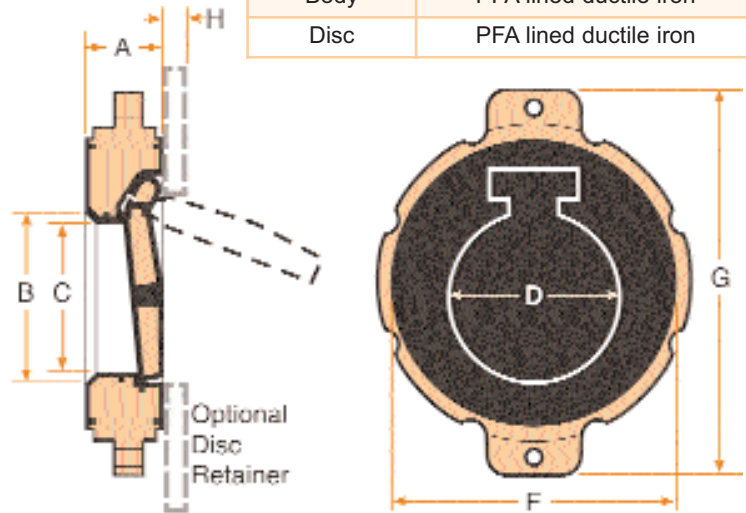
## Materials Of Construction

Body	PFA lined ductile iron
Disc	PFA lined ductile iron

Maximum allowable  $\Delta P = 250$  psi.

## Leak Rate

$\Delta P$ (psi)	Leak Rate
0 - 40	5 - 10 cc/min.
41 - 74	3 - 5 cc/min.
75 and over	0



## Dimensions (inches)

Size	A	B	C	D	F	G	H	Wt.lbs.	Mating Pipe I.D.*		Cv Factors
									Min.	Max.	
3	1.81	2.28	1.65	2.20	5.04	7.00	.375	7	2.88	3.23	100
4	1.81	3.31	2.56	3.20	6.38	8.88	.375	13	3.74	4.17	234
6	2.25	5.02	4.37	4.90	8.35	11.00	.375	28	5.71	6.22	667
8	2.63	6.91	5.24	6.77	10.51	13.50	.375	50	7.56	7.87	1404
10	2.67	8.74	7.24	8.70	12.48	15.50	.375	63	9.53	10.23	1955
12	3.07	10.71	9.13	10.50	14.45	17.40	.375	93	11.50	12.20	3106

\* Required to retain disc in valve body. If pipe I.D. exceeds maximum, use optional disc retainer.  
Pressure to unseat ( $\Delta P$ ) in horizontal or vertical pipeline: less than 1 psi.