

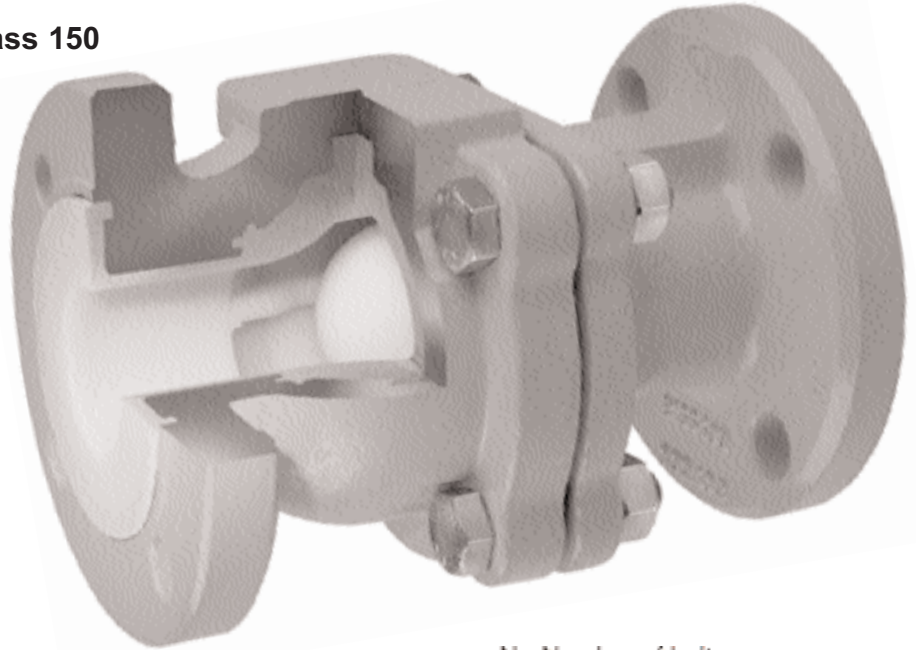
# B202 Ball Check Valve

Formerly 072

Sizes 1/2 through 6 inch, ANSI Class 150

This valve can be installed in vertical pipe with upward flow. The patented ball seating design also provides for horizontal installation.\*

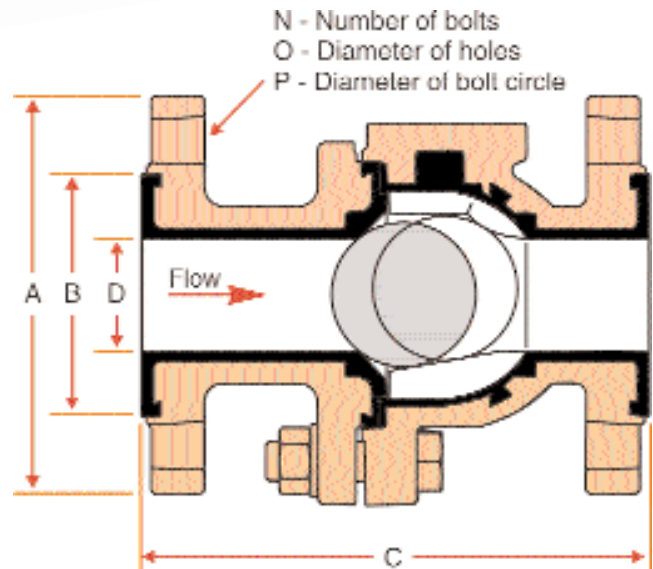
Refer to page 18 for pressure-temperature ratings.



## Materials of construction

Body	PFA lined ductile iron
Ball	Solid PTFE
Bolting	B7 carbon steel

Other lining materials available upon request.



## Dimensions (inches)

Size	A	B	C	D	N	O	P	Wt.lbs.	Opening Pressure Vertical Installation PSI	Cv Values
1/2	3.50	1.57	5.12	0.59	4	0.62	2.36	9	0.28	0.8
3/4	3.86	1.97	5.91	0.79	4	0.62	2.72	11	0.16	1.1
1	4.25	2.01	6.00	0.91	4	0.62	3.11	11	0.13	2.2
1 1/2	5.00	2.87	7.00	1.42	4	0.62	3.86	23	0.17	50
2	5.98	3.62	8.00	1.85	4	0.75	4.72	29	0.17	87
3	7.52	4.92	9.50	3.07	4	0.75	5.98	68	0.32	235
4	9.02	6.18	11.50	3.74	8	0.75	7.50	103	0.46	263
6	10.98	8.27	14.00	5.71	8	0.88	9.49	189	0.54	302

\* U.S. Patent No. 5,971,015